

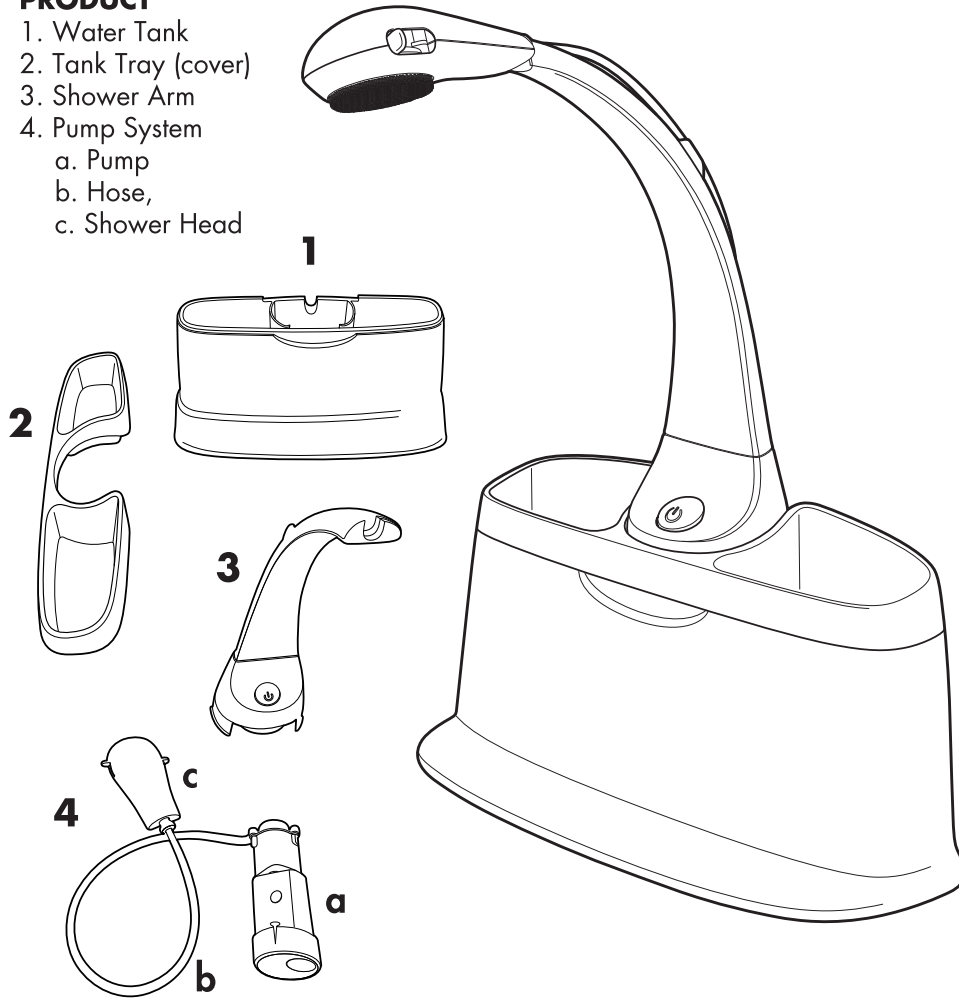
the **first** years®

Rain Shower Spa Instructions

Y7844

PRODUCT

1. Water Tank
2. Tank Tray (cover)
3. Shower Arm
4. Pump System
 - a. Pump
 - b. Hose,
 - c. Shower Head



READ ALL INSTRUCTIONS BEFORE USING.

**KEEP THESE INSTRUCTIONS
FOR FUTURE REFERENCE.**

FOR HOUSEHOLD USE ONLY.

⚠️ **WARNING:**

⚠️ **Drowning Hazard:** Babies have **drowned** while using infant bath tubs and infant bathtub accessories.

To prevent drowning:

- **Stay** in arm's reach of your baby.
- **Never** rely on a toddler or preschooler to help your baby or alert you to trouble. Babies have drowned even with other children in or near bath tub.
- Babies can drown in as little as **1 inch** of water. Use as little water as possible to bathe your baby.
- Use in **empty** adult tub or sink.
- Keep drain **open** in adult tub or sink.

⚠️ **Fall Hazard:** Babies have suffered **head injuries** falling from infant bath tubs and slings.

To prevent falls:

- Place tub **only** on level surface in sink or adult tub.
- **ALWAYS** use this product on a level surface.
- **Never lift or carry baby in tub or in infant sling.**

⚠️ **WARNING:**

- Keep batteries away from children. Parents are urged to exercise care in the storage, use, and disposal of all batteries.
- Do not use rechargeable batteries.
- Non-rechargeable batteries are not to be recharged.
- Batteries are to be inserted with the correct polarity.
- Exhausted batteries are to be removed from the product and disposed of properly.
- Supply terminals are not to be short-circuited.
- Different types of batteries (e.g. alkaline, standard, carbon-zinc) or new and used batteries are not to be mixed.
- Do not dispose of batteries in fire, they may explode or leak.

⚠️ **WARNING:**

Changes or modifications to this unit not expressly approved by the party responsible for compliance could void the user's authority to operate the equipment.

NOTE: This equipment has been tested and found to comply with the limits for a Class B digital device, pursuant to Part 15 of the FCC Rules. These limits are designed to provide reasonable protection against harmful interference in a residential installation. This equipment generates, uses, and can radiate radio frequency energy and, if not installed and used in accordance with the instructions, may cause harmful interference to radio communications. However, there is no guarantee that interference will not occur in a particular installation. If this equipment does cause harmful interference to radio or television reception, which can be determined by turning the equipment off and on, the user is encouraged to try to correct the interference by one or more of the following measures:

- Reorient or relocate the receiving antenna
- Increase the separation between the equipment and receiver
- Connect the equipment into an outlet on a circuit different from that to which the receiver is connected.
- Consult the dealer or an experienced radio TV technician for help.

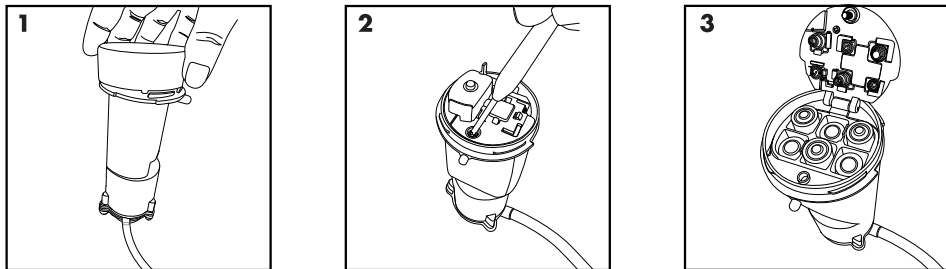
This device complies with Part 15 of the FCC Rules. Operation is subject to the following two conditions:

1. This device may not cause harmful interference, and
2. This device must accept any interference received, including interference that may cause undesired operation.

CAN ICES-003(B)/NMB-003(B)

To Install Batteries

Remove the Pump lid by turning counter clockwise. (Fig. 1) Use a Phillips head screwdriver to open battery compartment and insert 6 –1.5V AA batteries (not included). (Fig. 2 and 3) Close the battery compartment and refasten the door with the screwdriver. Replace the Pump lid.

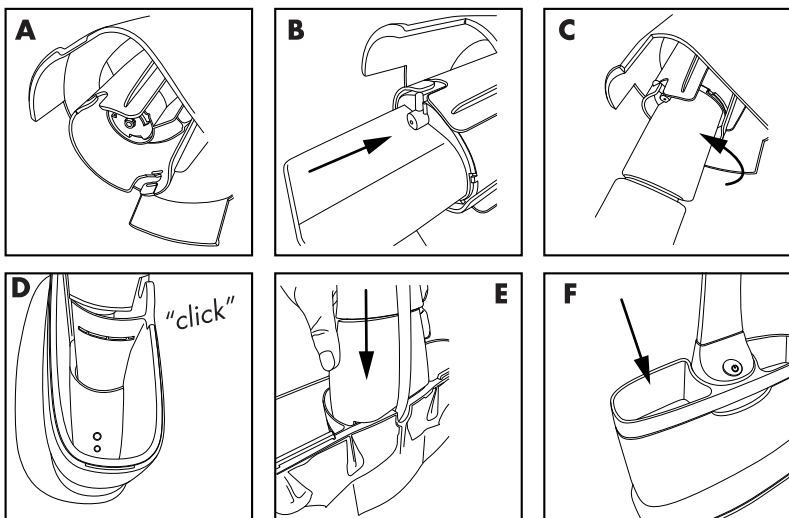


To Assemble (Adult use and assembly)

1. Remove all packaging attached.
2. Attach the Pump System to the Shower Arm by aligning the pegs on the outside of the Pump with the slots inside the Shower Arm. Twist to secure. Ensure the hose is to the back of the shower arm. (Fig. A, B, and C)
3. Place the Arm with Pump into the tank. The tabs on arm will click into the slots on tank. (Fig. D)
4. The hose should run up the back of the arm through the hole at the back of the Tank. (Fig. E)
5. Attach the Hose and then the Shower Head to the Shower Arm.
6. Install the Tank Tray. (Fig. F)
7. Get ready to treat your baby to a relaxing Rain Shower Spa!

Important: Never bathe baby until you have tested the water temperature by touch.

Note: Typical water temperature for a bathing baby should be between 90°F and 100°F.

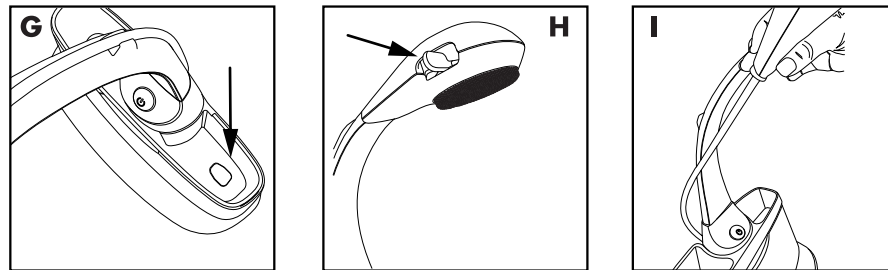


To Use with Baby Bathtub

- Operate only when fully assembled in accordance with these instructions.
- Always use with adult supervision. Never allow other children to substitute for adult supervision.
- Never allow child to pull on or hang from bar

Remove the Tank Tray. Ensure the Tank plug is securely in place. (Fig. G) Fill the Tank with warm water and replace the Tank Tray. Place the Rain Shower Spa at either side or at either end of the baby tub. Choose placement that allows you to easily access the Shower Arm while bathing baby.

To start the water flow, press the Shower Arm button. To stop the water flow, press the Shower Arm button again. **NOTE:** Never run the Pump with an empty Tank.



The Shower Arm swivels from side to side for custom coverage. Use the water flow control knob (Fig. H) on the Shower Head to adjust the flow to your desired level.

The Shower Head can be detached from the Shower Arm to easily reach your baby with the shower. (Fig. I) The Head also includes a brush for gentle scrubbing.

To Clean & Store

The surface areas of the Rain Shower Spa can be cleaned by wiping with a damp cloth. Let the spa fully air dry before storing.

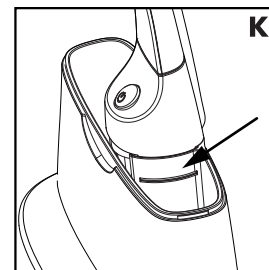
TIPS & TROUBLESHOOTING

Low or No Water Pressure from Pump

- Check position of flow control lever on shower head
- Turn pump off for 10 seconds and re-start pump
- Ensure the shower hose is not pinched
- Make sure batteries are fresh and installed correctly
- Remove Tank Tray and fill Tank with clean water
- If problem continues, remove Shower Arm from Tank and drain all the water. Then, reinstall the Shower Arm, fill up the Water Tank, and Turn ON.

Maximizing Rain Shower Spa Performance

- Make sure batteries are fresh and installed correctly
- Make sure water level is not above the shower arm attachment slot (Fig. K)
- Make sure Tank Tray is properly in place
- Make sure Shower Arm and Pump System are installed correctly
- Make sure the shower hose is not pinched at any points



If you have a warranty question or any other customer care questions, please contact our Customer Care team by calling 800-704-8697 or by e-mailing cs@tomy.com. You can also visit our warranty page at: <https://us.tomy.com/warranty>

embrace every **first**[™]
help@thefirstyears.com / 1-800-704-8697 / www.thefirstyears.com



THE FIRST YEARS name and logo are the trademarks of TOMY, registered in the U.S. and other countries.

TOMY USA

© 2020 TOMY, TOMY INTERNATIONAL, 2015 SPRING RD., OAK BROOK, IL 60523 U.S.A.

TOMY EUROPE

HEMBURY HOUSE, EXETER, EX2 5AZ, UK

TOMY EUROPE IS THE TRADING NAME OF TOMY UK CO., LTD

TOMY FRANCE

CS70358, 74164 ARCHAMPS, FRANCE

ALL RIGHTS RESERVED. STYLES AND COLORS MAY VARY. MADE IN CHINA.

Y7844 112320

TOMY